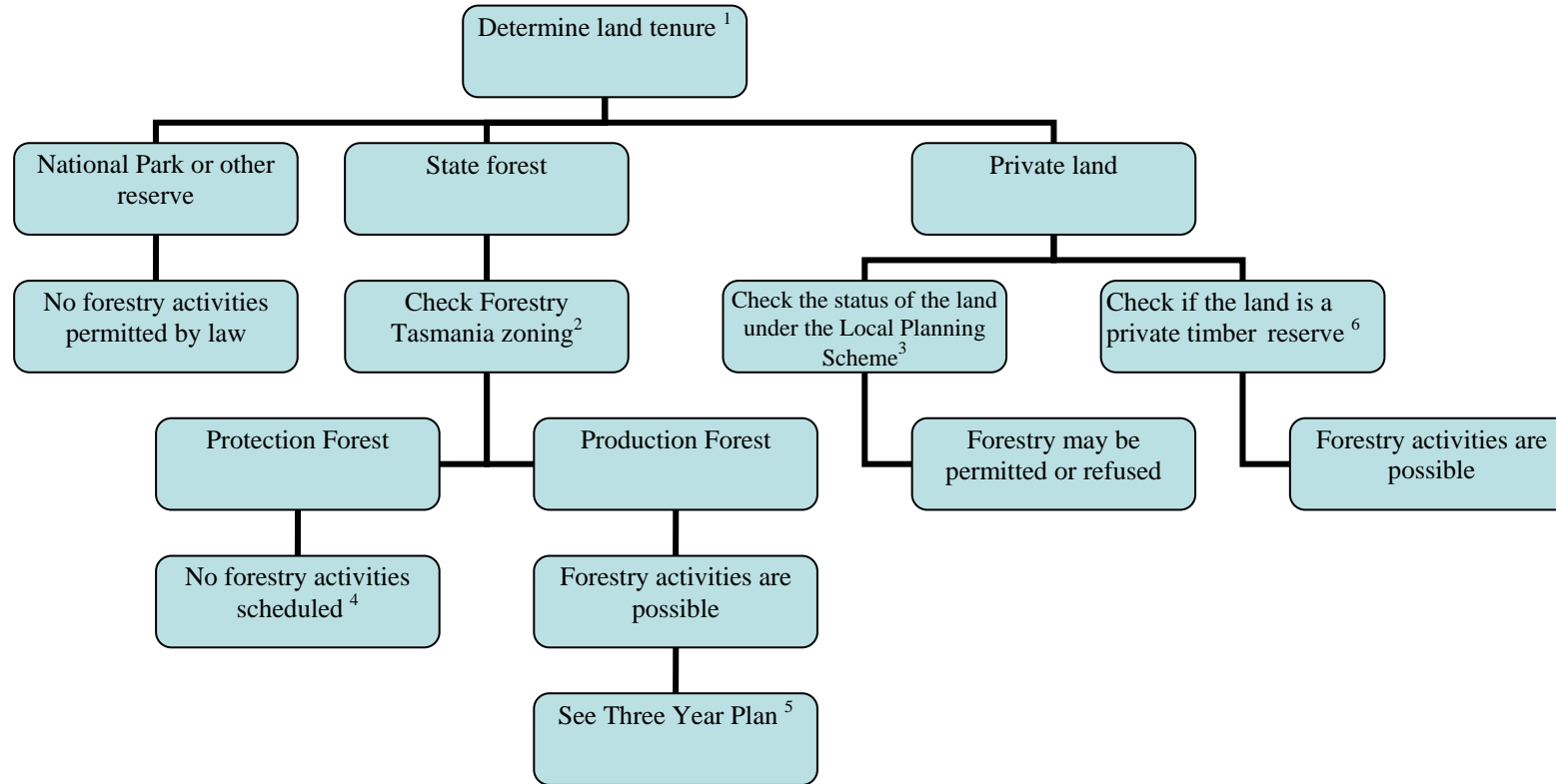


**A guide to assist landowners determine whether forestry activities are possible or not upon certain classes of land**



Footnotes

- 1 Land tenure may be ascertained from the LIST (Land Information System of Tasmania)
- 2 State forests are classified into Management Decision Classification (MDC) zones, which indicate the management priority for each zone.
- 3 Planning Schemes are available from local government Websites or by contacting local government offices directly.
- 4 MDC zoning for State forest may be reviewed and revised at any time by Forestry Tasmania
- 5 Three Year Plans prepared by Forestry Tasmania can be accessed at [www.forestrytas.com.au](http://www.forestrytas.com.au). Coupes not contained in the Three Year Plan may be scheduled for forestry activities at any time.
- 6 A search engine for private timber reserves is available at [www.thelist.tas.gov.au/](http://www.thelist.tas.gov.au/)