

Possibilities for developing the forest practices system – a biodiversity perspective

Amelia Koch



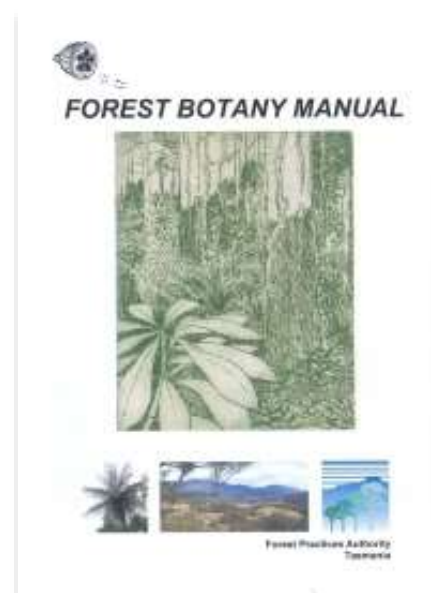
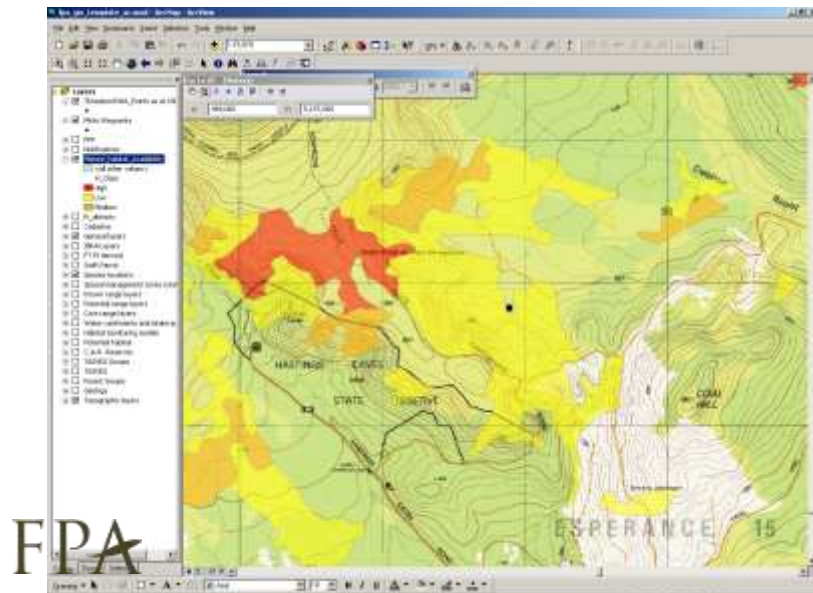
Scale

- Need a more landscape approach
 - Overcome problems before coupe-level planning
 - Mature forest
 - Catchment management



Planning tools

- Develop planning tools that work at the different spatial scales (eg landscape planning)
- Make planning tools more user-friendly (e.g. phone apps)



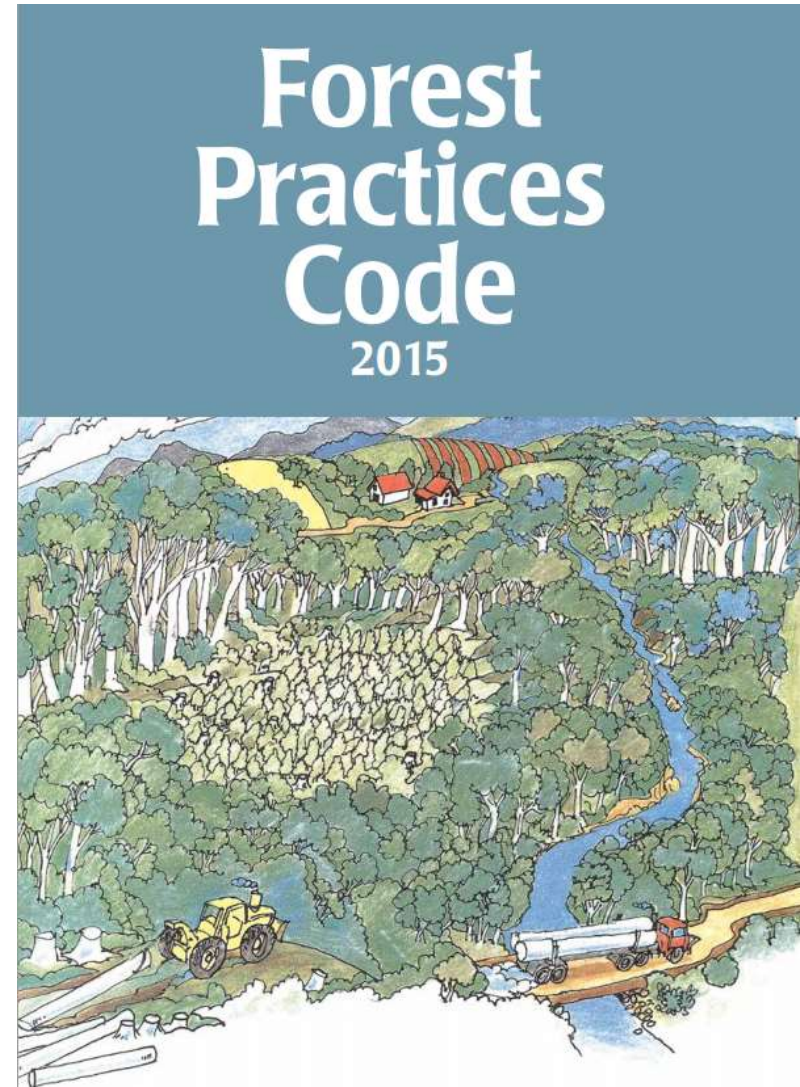
More monitoring

- Implementation and effectiveness of measures (eg VMAs)
- Get shapefiles of all coupes, to facilitate monitoring and future planning
 - Recording and mapping of areas retained for forest practices reasons (eg. vulnerable land)



Legal context

- Look into how ‘social and economic’ factors can/should be balanced with environmental factors
 - Duty of care, private versus public land
 - Offsetting and compensation options



Communication

- Communicate to ENGOs and the public about how the system works
- Maintaining relationships with stakeholders and DPIPWWE
- Improve ability for FPOs to provide feedback
- Training!!



